



Antioch Fine Arts Foundation Art Lines

ANTIOCH
Fine Arts
FOUNDATION
983 Main St.
Antioch, IL 60002
www.antiochfinearts.org

"The Antioch Fine Arts Foundation serves the community by providing education, resources and a forum for the creation and expression of visual arts for members and residents in Antioch & surrounding areas."

A Monthly Newsletter

Gallery Open 10am-4pm Th-Sat & Sundays 12-4pm

January, 2012

AFAF Board: President - Gayle Mondie
Vice Pres. - Roger Shule
Secretary - Katie Di Orio

Treasurer - Rich Ellinghusen
Gallery - Bernita Schutte
Web - Raymond Jude Kaider

Newsletter - news@antiochfinearts.org
Promotions - Bev Walczak

CALENDAR:

Tuesday, January 10th -

AFAF Board Meeting – 6pm

AFAF Membership Meeting – 7pm

Artist Demo – 7:15pm -
DVD Presentation of the 2011
Exhibition of Transparent
Watercolor Society of America

Where: Antioch Library

December 31st, January 1st & 2nd

Pick up old/drop off new
artwork with hanging fees.

January 3rd - Hang new show.

January - Featured Artist-
Student Artwork taught by
Diane Bates.

January 14th - AFAF and Save-A-Pet
Fundraiser Reception, 1-5pm.

January 14th - Live Folk Music
at the Gallery.

January 21st - Antioch Winter
Wine Walk.

January 28th & 29th - Drop off
People's Choice artwork with
entry fee. See page two for
complete details.

February - AFAF Exhibition &
People's Choice Awards voting.

February 26th - People Choice
Awards Reception, 1-5pm.

Happy New Year!

January is going to be great fun at our gallery. It involves; Artwork, Young People, Animals and Scholarships.

Let me explain. Diane Bates, one of our AFAF art teachers, has lead her young people's class in a project beyond the studio, it includes turning their art work into a fundraiser as they seek to help the abandon animals in our community (via Save-A-Pet). Additionally, the funds they raise will help young students



photo by Jude Kaider

who would like to take an art class at our foundation, but who do not have the funds. Heartwarming to see the guidance these young art students are receiving through this project. Please come and see what's new in our Gallery's White Room in January which will feature the work of these young artists.

Let's plan to support this project by joining the fun on Saturday, January 14th from 1-5pm for the Artist's reception. The Raffle Drawing will be held at 4pm, proceeds will benefit the local Save-A-Pet as well as the AFAF scholarship fund.

What a great way to kick off 2012!

Wishing you all a healthy and fulfilling new year,
Gayle Mondie

Save-A-Pet





In 2011 we saw "Bears on the Chain"... 2012 is "Chillin' on the Chain"!

Letter from Antioch Chamber of Commerce and Industry:

The Antioch Chamber of Commerce is proud to announce the donation of \$16,000+ this year as a result of Antioch's Bears on the Chain Public Art Program!

Antioch's Public Art Program is a joint venture between Antioch's Artistic and Business Communities. Antioch's Fine Art Foundation has been instrumental in providing artistic talent for Antioch's Public Art Programs. Since the creation of Antioch's Public Art Program in 2010, a total of \$36,000+ has been donated to local charities as a result of the artists, sponsors, and the generosity of our auction bidders.

The Antioch Chamber is proud to announce the unveiling of Antioch's 2012 Public Art Program—CHILLIN' ON THE CHAIN, featuring an Adirondack Chair. The Antioch Chamber looks forward to working with the Artists of the AFAF and with Artists from our surrounding Communities on this project.

Barbara Porch

Executive Director, Antioch Chamber of Commerce and Industry



Welcome Home Chair



Jimi Hendrix Chair

Chair Art courtesy of Racine, WI

Participate in the "Chillin' on the Chain Fundraiser Art Project"

Here is how you can get the informational packets:

- Forms are available at the AFAF Gallery - stop up and grab one.
- Forms are also available at the chamber office in their foyer
- Forms can be downloaded at <http://www.antiochchamber.org/index.php?m=58>



You still have time, and what a great way to start the new year! Designs are due to the Chamber by January 30th!

This February we bring you our first Antioch Fine Arts Foundation Exhibition with People's Choice Awards!

Let's see your best work in February, and then tell your family and friends to come and vote!

PRIZE: 1st place \$100, 2nd Place \$50, 3rd Place \$25. (1st, 2nd and 3rd place in each category, total awards \$350).

IT IS EASY: Bring artwork Jan 28 and 29 - Bernita will coordinate the hanging of the show. You can enter up to 2 pieces in each category. A brief entry form will be provided at the gallery, fill it out and attach it to your work and pay your \$5 entry fee per piece* (be sure to get a receipt for it!).

CATEGORIES:

2 Dimensional (2D), examples include but are not limited to; Paintings, Photography, sketches, flat stained glass.

3 Dimensional (3D), examples include but are not limited to sculptures, jewelry, pottery, scarves.

The white room will be expanded to include the hallway and the bright display shelves.

Ballots will be available in the white room, they must be signed by the voter and deposited into the locked ballot box. Ballots will be counted by two members of the board and one general member. All members can enter, including the board.

Tell your friends to come and vote! One vote per visitor/member. Voting ends at 12 noon on February 26th.


Reception will be Sunday, February 26th at 1:00 pm where all 6 awards will be presented (1st through 3rd place for each category).

NOTE: Artwork which sells will bring the owner 85% of the sale (the gallery will only receive 15% of sales for all works entered and sold during the contest). Price your work to sell if you'd like! Or make it "NFS" (not for sale) - mark option on the entry form.

*Artists can submit maximum of two entries in each category.

Member News:

January Board Meeting – 1/10/12 at 6pm for Board and 7pm for Members. For our demo we will view the Transparent Watercolor Society of America DVD from the 2011 Exhibition (which was up in Kenosha). The images are beautiful!



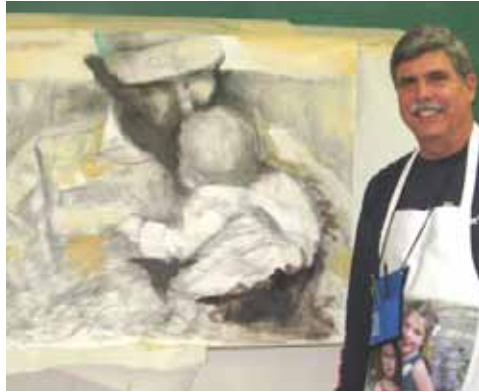
Transparent Watercolor Society of America

By the way, it is not too late to enter the 2012 exhibition (Entries need to be in by January 13th). Several Awards adding up to \$12,000! Forms are available at http://watercolors.org/templates/2012_Prospectus_9_2011.pdf

CLC Members Exhibition

Roger Shule and Jude Kaider will have works on display at the CLC Members Exhibition, January 13th - February 19th, 2012 at the Robert Wright Gallery at CLC. The reception will be held Friday, January 13th from 7-9pm at CLC's Gallery.

Artists, please continue to send us information on what you are up to so we can let everyone know. As we point everyone to your work, please remember to send those you meet back to the AFAF gallery to see all the work here!



The Department of Veterans Affairs Project is something that our own Ken Lutgen is involved in and this acrylic painting, if accepted, will be on the third floor of the Captain James A. Lovell Health Care Center.

It's looking great Ken!

Please join us in welcoming our newest Antioch Fine Arts Member:

Chelsea T.

Nippersink Public Library Displays Artists' Work!

From January 4, until February 29, 2012, you can see the work of Jackie Hagi, Roger Shule, Margie Krutsch, Dennis Boehm, Debbie Morgan, along with other area artists, all displayed at the Nippersink Public Library in Richmond.



New AFAF Classes Starting Soon!



photo by Jude Kaider

Diane Bates is continuing her classes for preteens and young adults! Students can develop their skills through traditional training and practice. Master the fundamental skills of drawing and painting in oil. Classes are ongoing, meeting on Monday or Tuesday 6:30 pm until 8:30 pm. A supply list will be provided. Contact Diane at dgurabates@yahoo.com or 847.838.2417

Marjie Krutsch will hold a hands-on class introducing students to the basics of stained glass which includes choosing glass, cutting, foiling, soldering and finishing. All materials are included and experienced students are welcome to come and work with fellow artists in a group atmosphere.

For enrollment information and to learn about other AFAF-member classes, download the latest AFAF Class Schedule available soon.

Make 2012 the year you continue your art education with the Antioch Fine Arts Foundation!

Want to get your work online?

Members - contact Jude at web@antiochfinearts.org to coordinate getting your images up on the website.

If anyone is interested in leading an Art demonstration in conjunction with the AFAF member meetings, leave a message at the gallery or call the gallery at 847.838.2274, just let us know what you would like to demo, and what dates you are interested in.

2012 Officer Election

At our members meeting on Tuesday December 13th the following slate of officers were elected to serve in 2012 in the following roles:

President - Gayle Mondie
Vice President - Roger Shule
Secretary - Katie Di'Orio
Treasurer - Rich Ellinghusen

Thank you to those who have served in the past year, and to those who are serving in the coming year, we appreciate your service.

Together we all make a positive difference.



It's Membership Renewal Time

You will receive a Membership Card with your paid dues/patron donation. With the membership card will come:

- **Discounts at local businesses/art supply stores** (notices in newsletters will let you know where and when to use your card for discounts)
- **Patrons who donate will have the following benefits:**
 - Level I \$35 2 Free Art Auction Raffle Tickets
 - Level II \$50 2 Art Auction Raffle tickets plus 5% off Gallery purchases
 - Level III \$75 2 Art Auction Raffle tickets plus 10% off of Gallery Purchases
 - Level IV \$100 or more 2 Art Auction Raffle tickets plus 15% off of Gallery Purchases

Artists who hang work in the gallery - Gallery Hanging Fees for 2012:

- Submit \$55 for a full year (includes \$5 discount)
- Those hanging work must sit the gallery for 4 hours each month
- **Unable to sit at the gallery but still want to hang your work?**
Pay one annual hanging fee of \$400 and you can hang your work without sitting at the gallery (the \$400 fee would include your hanging fees - a savings of \$55/year and 48 hours of sitting at the gallery).

ANTIOCH
Fine Arts
FOUNDATION

Antioch Fine Arts Foundation Membership Cards

If you have renewed your membership or become a new member for 2012, your AFAF membership card is on it's way to you!

Please note that when you bring this card to Dick Blick Art Supply store (Schaumburg, Evanston or Chicago) you can sign up for a preferred card without the \$10 fee. That preferred card brings savings on purchases!



There will be other offers available throughout the year that a simple flash of your membership card will get you a discount. Stay tuned to our newsletters to get info on those discounts.



Members:

Kindly Return: Two Large Gallery Portfolios (34 x 27 x 4) were borrowed, kindly return them as they are needed to transport paintings to local art exhibits.

Going to show in the White Room?

Roger Shule will be contacting you two months before you show, asking you for the date of your reception, a few images and an artists statement. Timing is everything, please get this to Roger promptly so you can then get a finished promotional piece back from AFAF which you can then send to your family/friends to invite them to your reception a month beforehand.

Gallery Workers:

- Please notate your phone number next to the hours you sign up for, it makes it easier for the previous day's 10am worker to call you to remind you of your commitment.
- Gallery workers who work the 10am shift, please call all workers for the following day to remind them of their commitment.
- Thanks to all who sign up and work, our success depends on you! (Isn't it aggravating to drive 10 miles and find your destination not open - thanks to our dedicated workers we don't have to get on anyone's "I'll never go there again' list!")



We are working closely with the Lakes Region Historical Society in finding ways to help each other be successful. Stay tuned for more information on an Art Exhibit planned for 2nd Qtr of 2012 over at the Meeting House and sponsored by Lakes Region Historical Society.