

February 2011

983 Main Street, Antioch IL 60002

847-838-2274

<http://www.antiochfinearts.org>

Th, Fri & Sa 10 a.m. to 4 p.m.
Sun 12 to 4 p.m.

Next AFAF Member Meeting
Tues, Feb 8, 6:30pm
AFAF Gallery

MARK YOUR CALENDAR

FEBRUARY 2011

1-Board Meeting at the Gallery
6:30 pm

8-Member's Meeting at the
Gallery 6:30 pm

12-Live Folk Music

14-Valentine's Day

26,27,28 Pick up/drop off new
artwork for hanging & pay hanging
fee

MARCH 2011

1- Hang new show

1-Board Meeting at the Gallery
6:30 pm

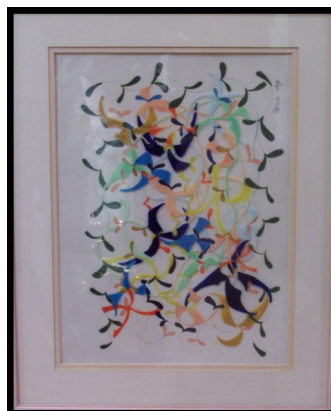
3- PM&L Event

8-Member's Meeting at the
Gallery 6:30 pm

Featured Artist - White Room Show

Patricia Lidge is our featured White Room artist for February. Patricia creates abstract watercolors inspired by orchids (her favorite flower).

Nature and the beauty that surrounds our world has always been her inspiration. She has received training from the American Academy of Art and Harper College. Her art was put on hold to raise her two lovely sons. Flowers and gardening grew into a passion in her art style.



She is happy to be a part of Antioch Fine Arts Foundation and appreciates their enthusiasm for local artists.

Come join her at her Artist's Reception February 12. Enjoy her artwork, as well as folk music and some goodies, too!

"Come forth into the light of things, let nature be your teacher."
William Wordsworth

What We're Up To

PATRICIA RODGERS is giving a free classical guitar concert on Feb. 13th, at 3pm, at Shepherd of the Lakes Church, 285 East Washington St., Grayslake, The concert is sponsored by the Sacred Space Music Series. Area vendors will provide some valentine treats during intermission and after the concert.



Some of Patty's artwork will also be on display at the church from Feb 11th through Feb 14th.

For more information call Gwendolyn Manter, Series Administrator, 847-223-4111.

TED FOSS just completed the Video Workshop of ' **Virginia Morriseau's**, Encaustic Technique, the Cold Technique'. This is now available by itself or in a kit. The kit includes everything one needs to paint encaustics.

He has also completed several other videos including, 'Stacey Crane, Artist -Trains and Much More' (a video meant to be sent to galleries) , 'Ben Goldstein, Nature Photographer' a personal project of his, 'Team Training with Sandy', a workout video, and 'Betty Sill, Artist', another personal project.



Ted's oil painting, Yellowstone Fall is displayed at the Lake County Bar Association, 300 Grand Ave, Waukegan. His photograph on canvas, Fall in the Tetons, is at the Wright Gallery. Ted is also showing at Twigs in Lake Bluff.



BONNIELYNN BRANKEY will again participate in the scuba trade show, Our World Underwater, at Donald Stephenson Center, Rosemont, Feb. 18-20, 2011. Her booth will show her underwater themed watercolors, oils, giclees and silk art/ scarves.



"Art is not a handicraft, it is the transmission of feeling the artist has experienced."

Leo Nikolaevich Tolstoy

What We're Up To (continued)

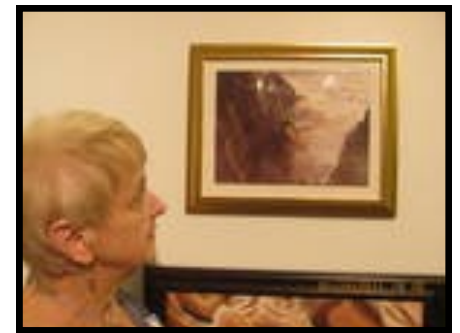


ROGER SHULE had an idea to do a play on the old come back line when he was younger. The answer to someone who asked “Do you have a match?” was “Not since Superman.” He thought it was a natural for a made up matchbook concept. It was fun and he actually went to a comic book store in Grayslake and bought a comic book, as well as browsed through several issues of some of his old favorites. He confesses, “Yes, I was a comic book fan.”



On the serious side... **ROGER SHULE** just found out he will have his tall skies watercolor “Wisconsin Farm”, in the Dole Mansion, in the Sage Gallery at 401 Country Club Road in Crystal Lake. Opening reception is February 4th 5:30 to 7:30. This show is featuring works from the Lakes Region Watercolor Guild. The exhibit runs through February 24.

SHARON ROLLINGS is very excited to have her first work being hung, outside of AFAF at the Robert T. Wright Community of Art at CLC. “It felt terrific!” The opening was Friday night, January 14, and the show will continue through February 20. There are about 100 works of art. They represent a lot of talent and the show is really worth seeing.



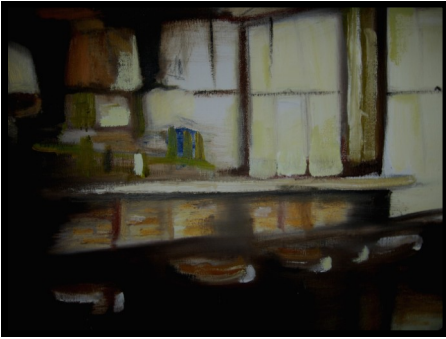
Along with **Sharon**, several other AFAF members are also displaying their work at the Annual Members Show at CLC. This year's exhibit is one of the largest ever. **Roger Shule, Ted Foss and Doug Foss, Jim Brooksher, Virginia Morresseau, Bonnie Brankey, Jim MacAyeal, Jerry Donahue and Aruna Sarode.**

*“If you hear a voice within you say ‘you cannot paint’,
then by all means paint and that voice will be silenced.”*

Vincent Van Gogh

What We're Up To (continued)

KEN LUTGEN is currently working on a 16 x 20" oil painting of the Red School House Café he likes to frequent.



DOUG FOSS will be exhibiting at the Lake County Bar Assoc as well as the Wright Gallery at CLC.



PAUL WEBER has been experimenting quite a bit with a freer, looser underpainting style, and enjoying the results immensely. So much so that he now routinely creates half a dozen or so "underpainting" images before working on an "official" painting. He hangs the underpaintings on his living room wall and leaves the "official" paintings in the studio!



He says, "It's always been very difficult for me to "finish" a painting, because I have to go in and ruin the underpainting. By creating several underpainting versions of an image, I hope to alleviate this issue."



www.AntiochFineArts.org

Be sure to visit our website frequently to find the most recent information about classes & events. You can also browse information about our artists and view some of their works.

Thank You & Have A Great Day! **EMAIL IT TO US! SAME DAY SERVICE ON MOST ITEMS**

FREE PICKUP & DELIVERY

Impressions Count
Printing, Banners & Signs

907 Main Street
Antioch, IL 60002
847-395-2445

CALL TODAY FOR ALL YOUR PRINTING & SIGNAGE NEEDS

MAGNETICS	FLYERS
CORPLAST SIGNS	BUSINESS CARDS
BANNERS	NEWSLETTERS
MENUS	BLUEPRINTS
LAMINATING	MAILING SERVICE
PROMOTIONAL ITEMS	SIGNAGE
COLOR COPIES	POSTCARDS
INVOICES	WEB DESIGN

A big "Thank you!" to Impressions Count, 907 Main St, Antioch for your contribution in printing ArtLines in "the mystic realm of color".

"The whole world, as we experience it visually, comes to us through the mystic realm of color."

Hans Hofmann, abstract expressionist painter

"Creativity is allowing yourself to make mistakes. Art is knowing which ones to keep."

Scott Adams

Follow Us On Twitter!

follow us on
twitter



Contact us:

Marilyn Ellinghusen, President mrchds@comcast.net or 847-629-5166

Roger Shule, Vice-President, shuleart@aol.com or 847-354-1292

Bonnielynn Brankey, Secretary, secretary@antiochfinearts.org or 262-857-7842

Rich Ellinghusen, Treasurer, raellinghusen@comcast.net

Bernita Schutte, Gallery Director, brnschut@comcast.net or 847-395-7027

Marilyn Kedzie, Membership Director, membership@antiochfinearts.org or 847-395-5873

Beverly Walczak, Publicity, beverlywalczak@att.net or 847-395-2741

jude kaider, webmaster, web@antiochfinearts.org or afaf@antiochfinearts.org

Lynne Krestan, ArtLines Editor, artlines@antiochfinearts.org or 847-356-2087

SEND ALL YOUR NEWS WITH PICTURES TO: news@antiochfinearts.org

VISIT OUR WEBSITE TODAY!

www.antiochfinearts.org



983 Main Street,

Antioch IL 60002

847-838-2274

www.antiochfinearts.org